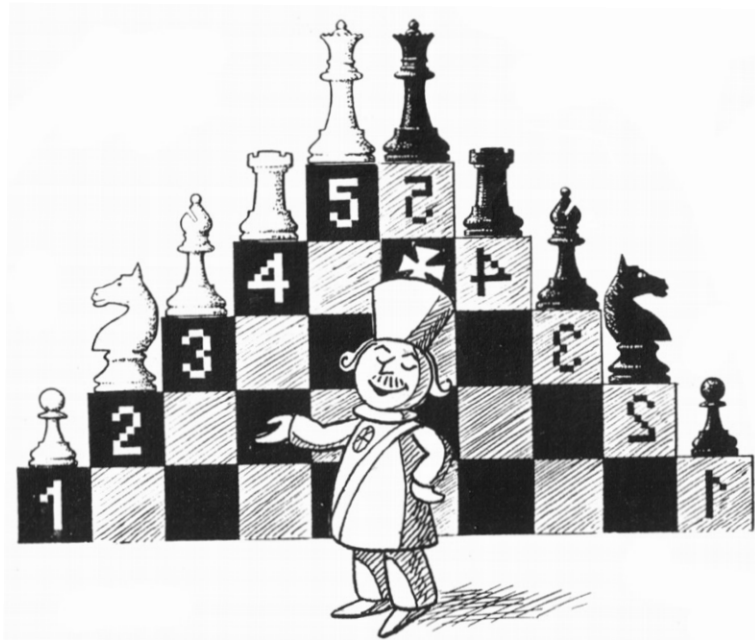


Stufe 1 Mix

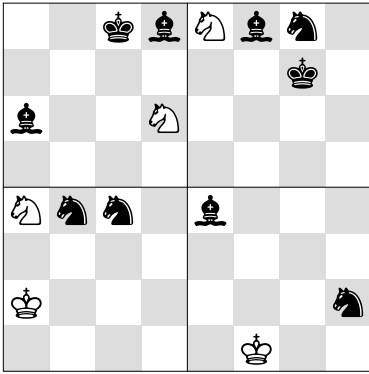


DE Ein Arbeitsbuch mit einem 'einfachen' Auftrag: Spiele jeweils den besten Zug! Genau wie in einer richtigen Partie weißt du nicht, ob du gewinnen kannst oder verteidigen sollst. Zuerst gut schauen, was los ist.

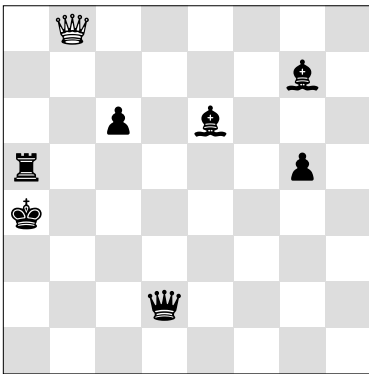
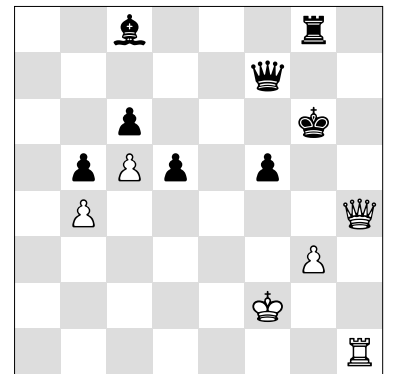
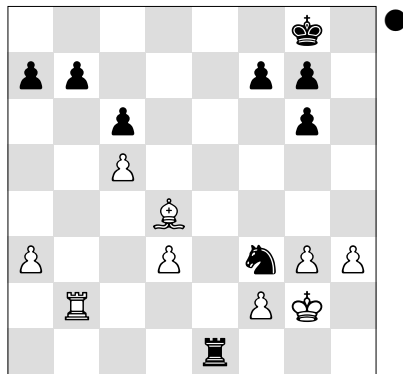
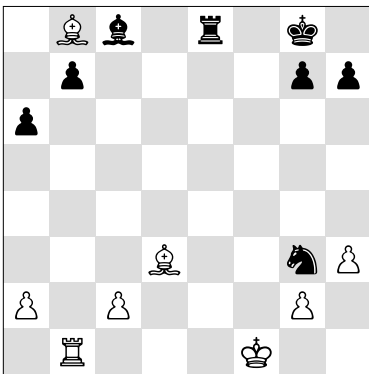
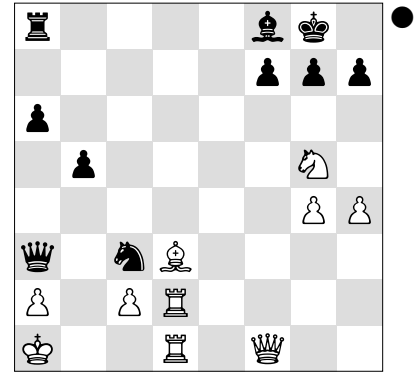
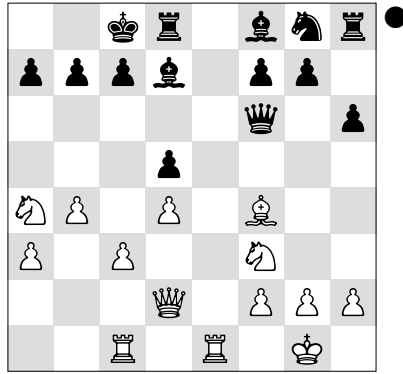
Steht der feindliche König unsicher? Setze Matt. Kannst du eine Figur schlagen? Suche ungedeckte oder unzureichend gedeckte Figuren. Ist eine eigene Figur in Gefahr? Verteidige! Ist der König im Schach oder droht matt? Unternimm etwas dagegen. In den Routenplanern spielt nur Weiß.

Mehr über die Stufe 1 Mix: <http://www.stappenmethode.nl/de/stufe1.php>

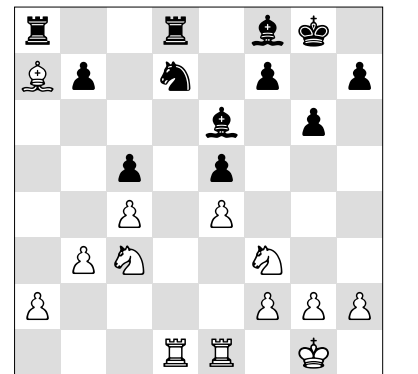
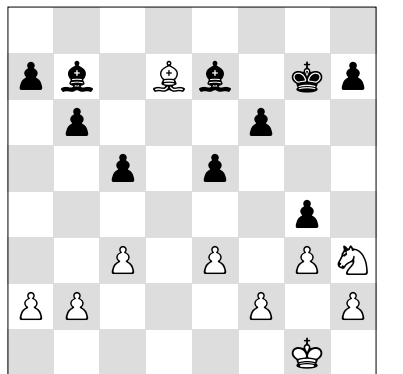
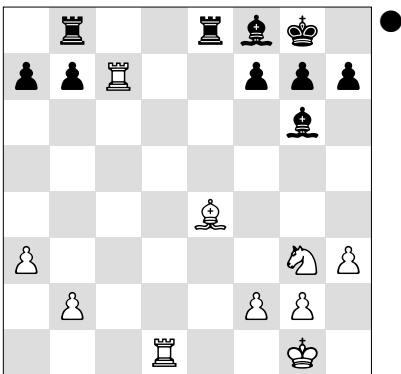
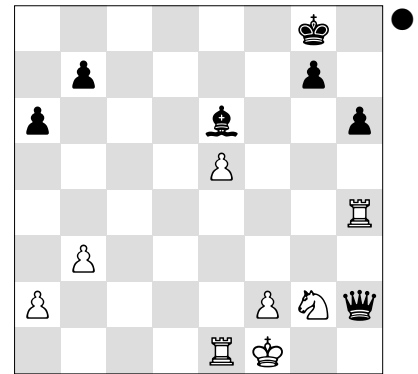
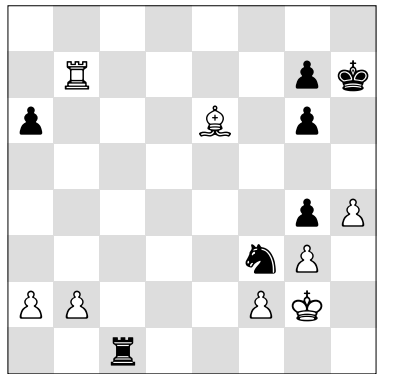
Für Informationen und Bestellungen verweisen wir auf die Webseiten:
<http://www.stappenmethode.nl/de> oder <https://www.stappenmethode.de/>

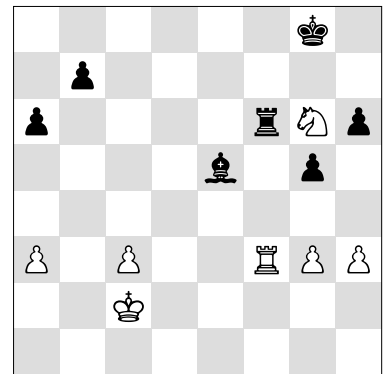
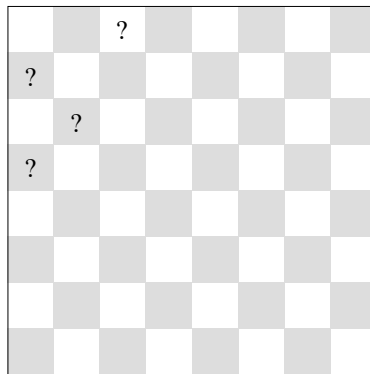
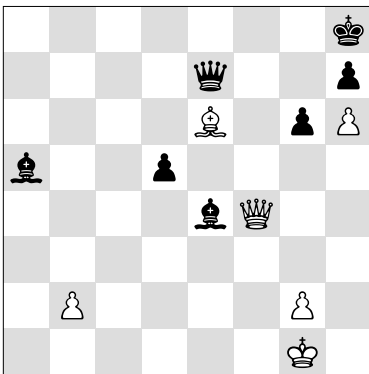
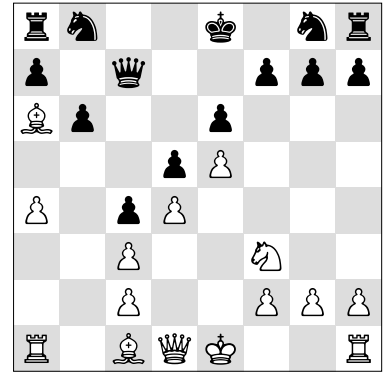
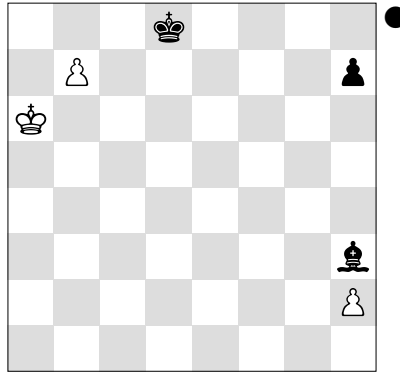
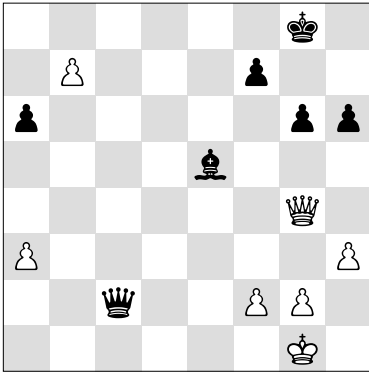


♔ = _____ ♔ = _____
 ♕ = _____ ♕ = _____

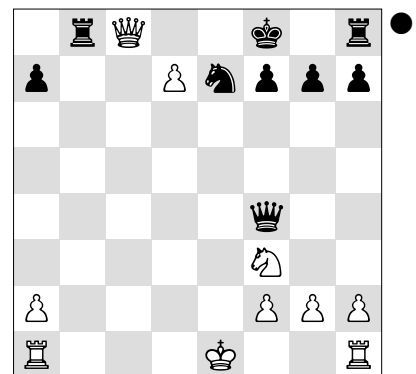
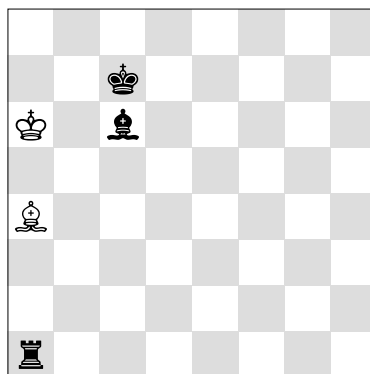
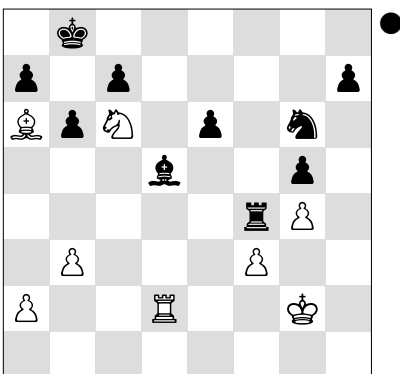
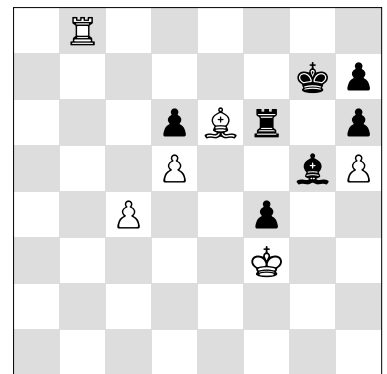
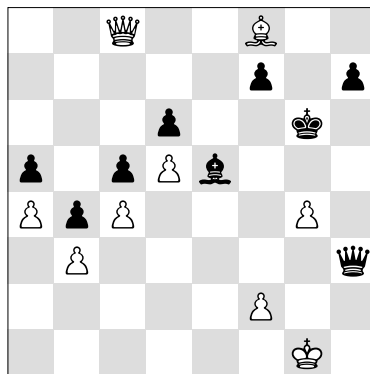
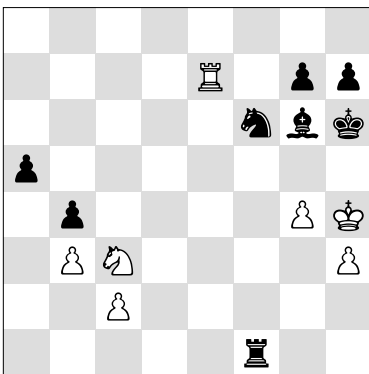


♔b8 - _____ - _____ +

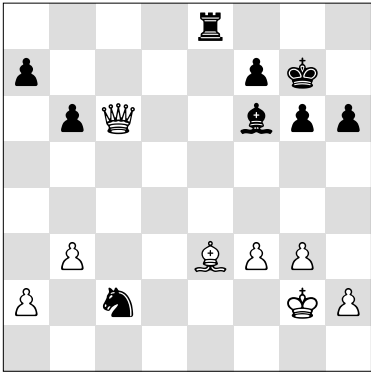




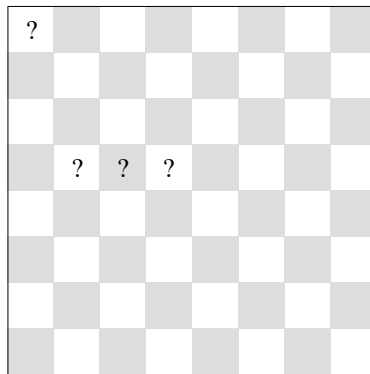
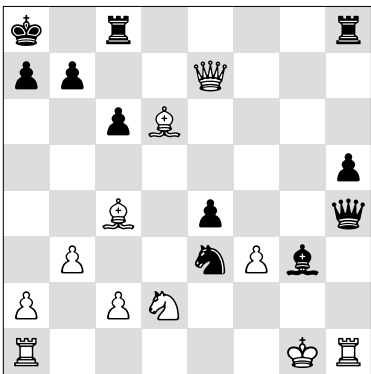
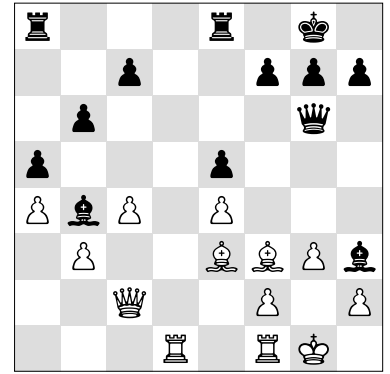
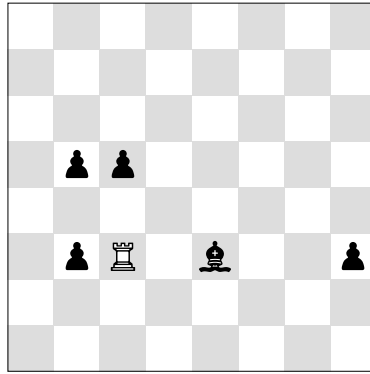
♔ = ___ ♕ = ___ ♖ = ___
♚ = ___



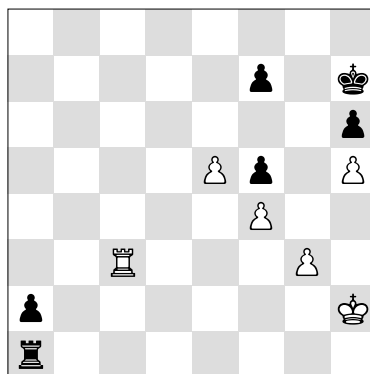
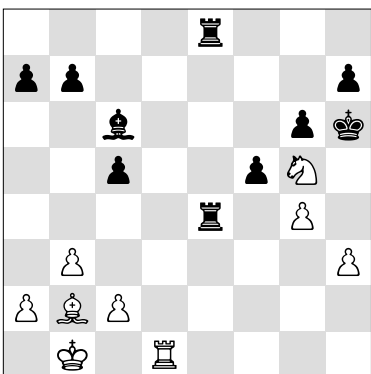
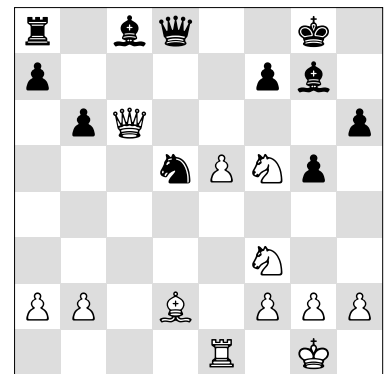
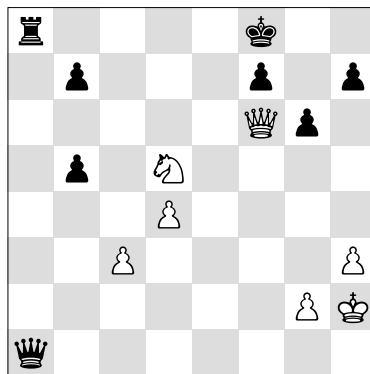
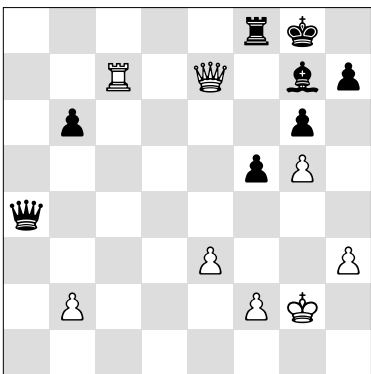
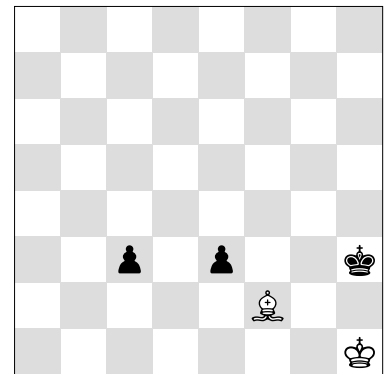
1. ♔a7 ___ # 1. ♔a5 ___ #



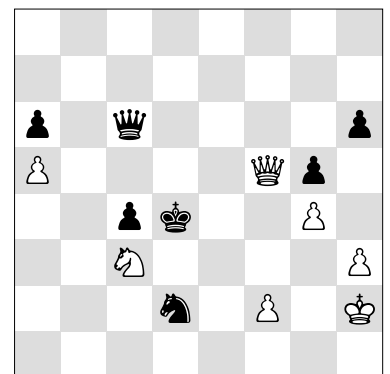
♖c3x x x x x

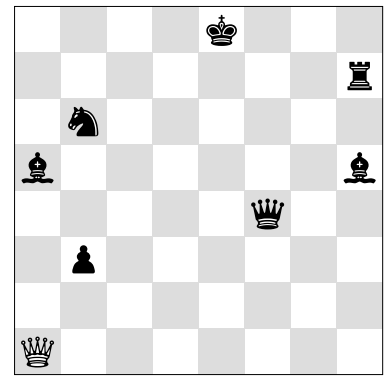
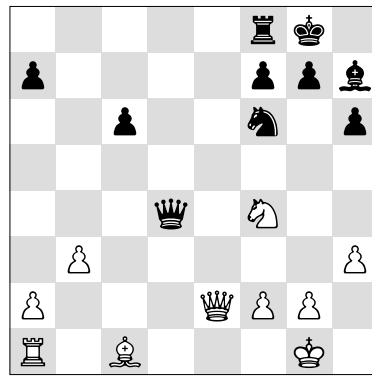
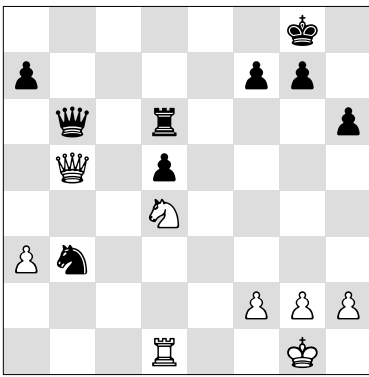
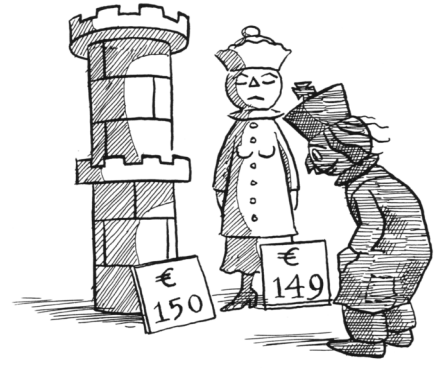
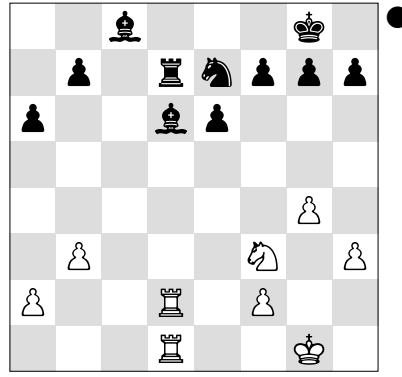
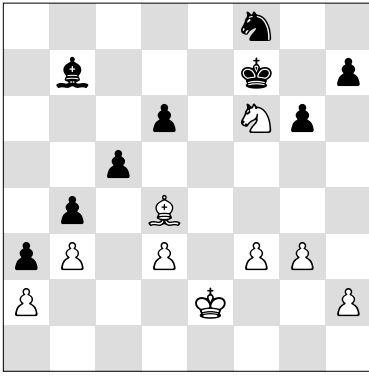


♖ = _ ♘ = _ ♙ = _
♚ = _

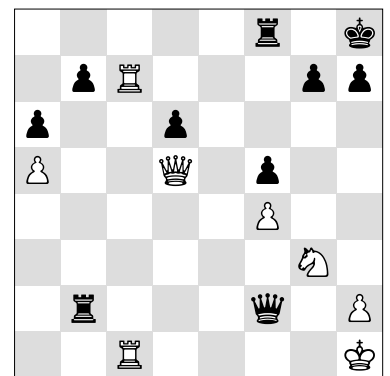
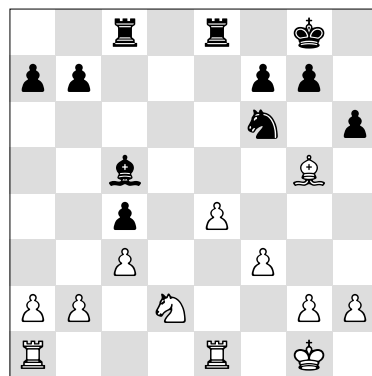
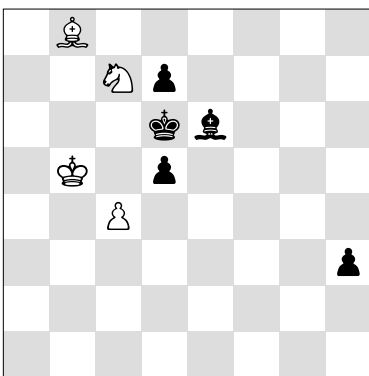
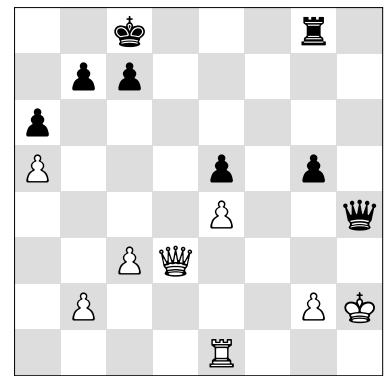
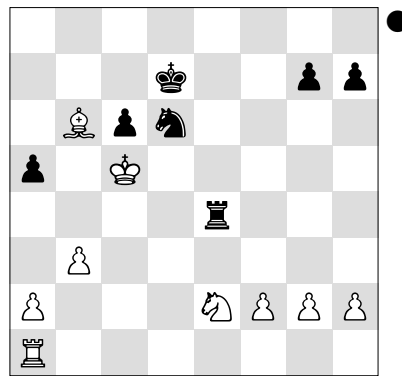
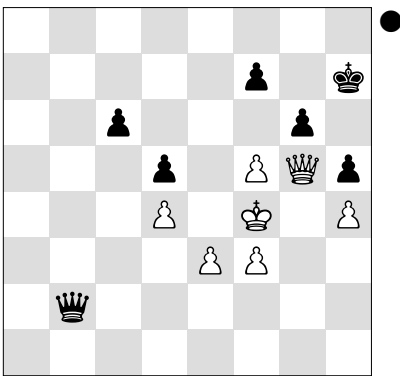


○ ♖c2 ○ ♖a3





♔a1 - ____ - ____ +



○ ♔h1 ○ ♔f1 ○ ♕e3